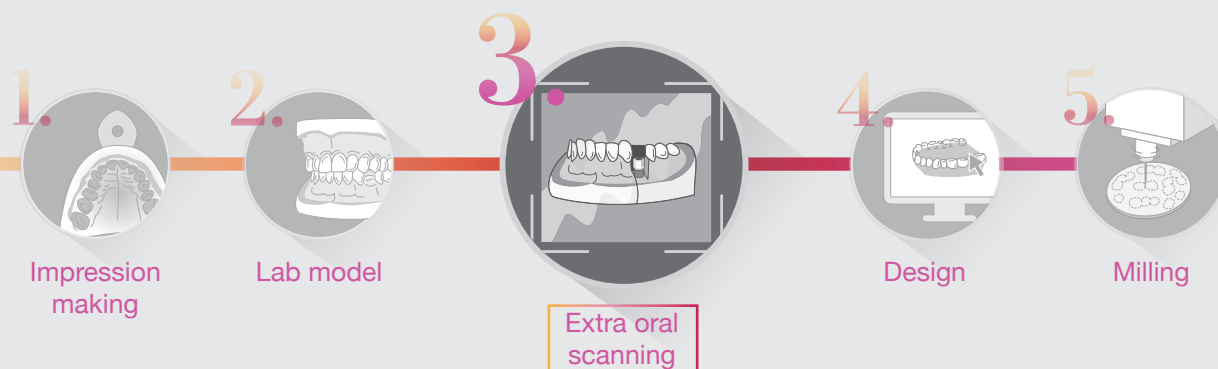


SOLUTIONS for CAD-CAM RESTORATIONS



LAB SCAN BODIES

Mixed work flow (conventional & digital)

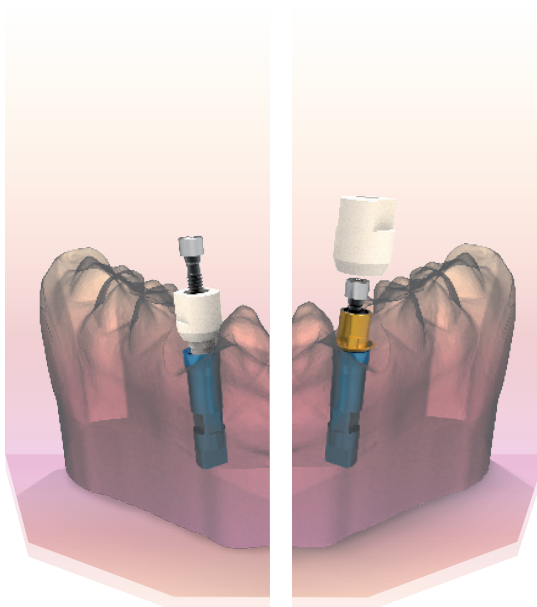


INTERNA® CONNECTION

DIRECT TO IMPLANT RESTORATION

EXTERNA® CONNECTION

Non Engaging	Engaging	Retaining screw
SBLIE0	SBLIE1	INTTUH
Interface (aesthetic abutment):*	SBLETZ	—
SBLIU0	SBLIU1	INTTUH
Interface (aesthetic abutment):*	SBLUTZ	—
SBLIA0	SBLIA1	INTTUH
Interface (aesthetic abutment):*	SBLATZ	—



Non Engaging	Engaging	Retaining screw
SBLT0	SBLT1	TTTH
Interface (aesthetic abutment):*	SBLETZ	—
SBLEU0	SBLEU1	TTUH
Interface (aesthetic abutment):*	SBLUTZ	—
SBLEA0	SBLEA1	TTUH
Interface (aesthetic abutment):*	SBLATZ	—

* When using the aesthetic abutment as interface, it would not be needed to screw the scanbody into the abutment.

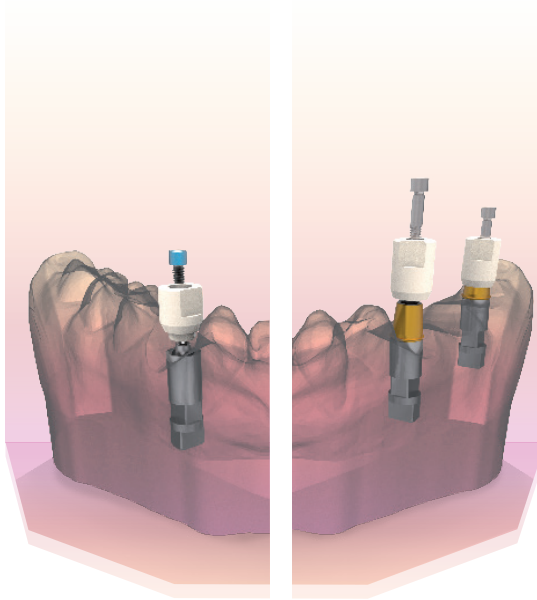
INTERNA® / EXTERNA® CONNECTIONS

INDIRECT RESTORATION WITH TRANSEPIHELIAL

INTERNA® / EXTERNA® CONNECTIONS

UNIT®

Scan Body	Retaining screw
SBLMIUPU	TTMIR
Interface (aesthetic abutment):*	SBLTZMIUPU
	SBLTZMIUPUL
Interface (aesthetic abutment):*	SBLMIUPA
	TTMIUPA
Interface (aesthetic abutment):*	SBLTZMIUPA



* When using the aesthetic abutment of Unit® Transepithelial as interface, it would not be needed to screw the scanbody into the abutment. ** When using the aesthetic abutment of Multi-Im® Transepithelial as interface, it should be used a specific retaining screw for screwing the scanbody into the abutment.

Multi-Im® STRAIGHT

Scan Body	Retaining screw
SBLMIPEU	TTMIR
Interface (aesthetic abutment):**	SBLTZMIPU
	SBLMIPA
Interface (aesthetic abutment):**	SBLTZMIPA

Multi-Im® ANGLED

Scan Body	Retaining screw
SBLMIEUA	TTMIR

For the digitalisation of the model, BTI has developed a range of lab scan bodies that enable a high precision transfer of the dentition geometry and implants position to the CAD software.

- Height 5mm
- Non engaging version has 3 sides
- Engaging version marked with nº1

The scan bodies libraries are available for Exocad, 3shape and Dental Wings software.

Tightening torque for screws: 10 Ncm

GENERAL INFORMATION

⚠ The engaging scan bodies are provided as single items and with no screws; the non-engaging ones – as a pack of 5 with no screws as well, except the scan bodies for the aesthetic abutment of Multi-Im® transepithelial that are provided with the specific retaining screws.

